

Groups



**Needle Tatting Two** NeedleTattingTwo@groups.msn.com

[What's New](#)

[Join Now](#)

[Messages](#)

[Pictures](#)

[SITE MAP](#)

[Tutorials](#)

[FAQ Data Base](#)

[Pattern Guide](#)

[MembersOriginal](#)

[Designs Pg. \(1\)](#)

[©Crinoline Lady](#)

[Pattern](#)

[Crinoline Lady](#)

[Photo](#)

[©Sherry's](#)

[Hummingbird](#)

[Photo](#)

[Hummingbird](#)

[©Pumpkin-By](#)

[Sherry](#)

[©Mauries](#)

[Bonnie&Angelique](#)

[©Abby's Mini](#)

[Cup&Saucer](#)

[©Smile Makers](#)

[By-Abby pg. 1](#)

[©Smile Makers](#)

[By-Abby pg. 2](#)

[©Smile Makers](#)

[By-Abby pg. 3](#)

[©Smile Makers By](#)

[Abby pg. 4](#)

[©Abby's Celtic](#)

[Doily](#)

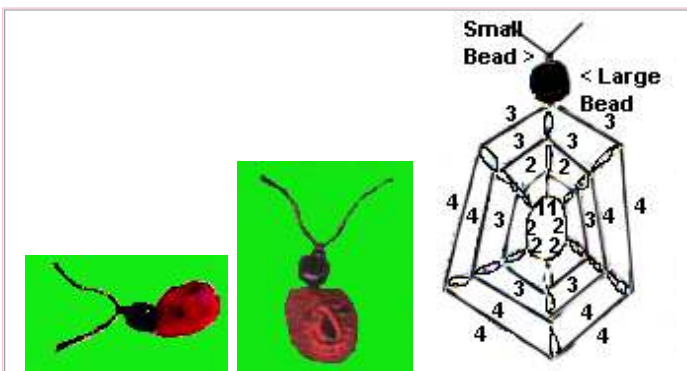
[©Violets Doily By](#)

[Abby](#)

[©Amy's Flag](#)

[©Emilia Angel Eva](#)

[Siding](#)



Smile Maker - Lady Bug © Abby aka Abbytatsalot

R=Ring P=Picot SP=Small picot

Bead placement can be added anywhere you desire. Each one will be a bit different as you place the bead. Red/Black #8 DMC. Beads can be added to the black thread and pulled up as needed, or you can add to the needle as you place them.

**Center ring of Lady Bug -**

**R** 1ds sp 2ds sp 2ds sp 2ds sp 2ds sp 1ds Close continue on.

**Row 2 -**

sp 2ds sp 3ds sp 3ds sp 3ds sp 3ds sp 2ds Join base of first ring.

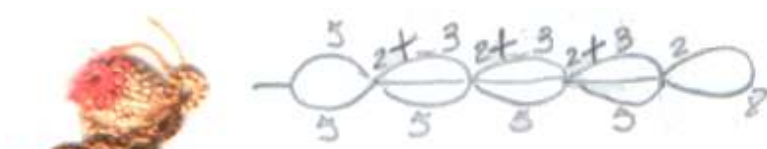
**Row 3 -**

sp 3ds sp 4ds sp 4ds sp 4ds sp 4ds sp 4ds sp 3ds join at base and pull tightly at this point to make the stitches cup.

**Row 4-**

Continue row 4 same as Row 3 join at base.

Once shaped, pull both threads through a large black bead for the head, then a small black bead. Knot at the small black bead, cut antenna length you desire.



Make Shell same as for the Ladybug.  
Make body, using split rings

5ds P 4ds Cl  
SR 2ds p 3ds / 5ds  
SR 2ds p 3ds / 5ds

[MembersOriginal](#)  
[©Designs Pg.\(2\)](#)  
[BasicNeedle](#)  
[Tatting©](#)  
[Advanced](#)  
[Techniques©](#)  
[Miscellaneous](#)  
[Tatting](#)  
[HolidayTatting](#)  
[Idea's](#)  
[LearnToShuttle](#)  
[ByFingerTatting©](#)  
[PracticePiece](#)  
[UsingSplits©](#)  
[Heathers Variation](#)  
[Web Site](#)  
[Backup Forum](#)

SR 2ds p 3ds / 5 ds.

R 2ds large P 8ds

Make Snail Shell same as for Ladybug, joining to the picots on the body. On the last ring 2ds make a large Picot and cut it to make the eyes/antenna. Abby made cute little Flowers on the back, which looks like little seashells.



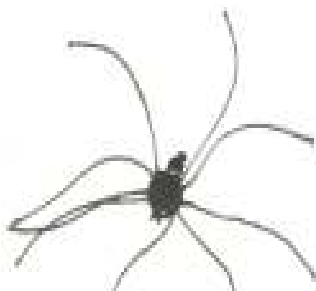
Tiny Turtle, uses 19 tiny brown beads, four on each foot, 3 on tail, and two green for eyes.

Make as for ladybug, for shell. On last round do 3ds 4beads 4ds 4beads 4ds 3beads 4ds 4beads 4ds 4beads 3ds

HEAD 6ds bead 2ds bead 6ds

Again Abby glued on a small flower on the shell, which gives it a seashell effect.

## Tools



No he is not as creepy as he looks. This cute little guy may have a stinger, but it is harmless.

If you want him to have the red spot on his back, add it on the first round.

R 1ds sp 2ds sp 2ds (1 red bead) 2ds sp 2ds sp 1ds

Work the next rounds as in the Ladybug.

On the last round:

3ds Very Large P 4ds VLP 4ds P (this picot will be cut at the end to make the stinger) 4ds VLP 4ds VLP 3ds

Head Large black bead, small black bead, tie knot. Pass the thread back down the large bead, and up through the first ring made to use for hanging, as a web string. Or just cut off at head if you do not want to hang it.

Enjoy and have fun making these, and if you make them please leave Abby a nice little note how you enjoyed them. We thank Abby once again for these adorable little Smile Makers.

### [Page 2 of Smile Makers:](#)

Snowman, Bunny, Bear, Monkey, Owl, Dino, Chicken, Ghost, Tiny Pumpkin, Fish, Mouse.

### [Page 3 Smile Makers:](#)

Batty, Frosch Frog, AbbyTat Kitty, Thomas Turkey

### [Page 4 Smile Makers:](#)

Red Lobster and Adam Ant

Notice: Microsoft has no responsibility for the content featured in this group. [Click here for more info.](#)

**Try MSN Internet Software for FREE!**

**MSN Home | My MSN | Hotmail | Search**

[Feedback](#) | [He](#)

©2005 Microsoft Corporation. All rights reserved. [Legal](#) [Advertise](#) [MSN Privacy](#)